



2022 Campaign Update

Stability Initiative



November 2015

Gift of land to build the new SMCHS is announced.



September 10, 2016

Campaign celebration at the site of the new SMCHS - with a picnic, hayrides and fireworks!



September 7, 2017

Campaign surpasses \$36 million pledged. Announcement of SMCHS Groundbreaking and Our Lady of Victory Chapel.



September 17, 2017

Groundbreaking Mass and official shovel ceremony at the site of the new SMCHS.

With the generous support of over 3,000 donors, we successfully reached our Keep the Promise Capital Campaign fundraising goal of \$46.5 million!

This tremendous undertaking, made possible by the hard work of so many individual sacrifices, has laid a foundation for an excellent Catholic school system that is faithful and unique in its promise to not turn away a student because of their inability to afford Catholic education or because of a lack of physical space. **Thanks to those who helped us reach this incredible point in the campaign!**

Now that we have reached such an important milestone, a question emerges for Light of Christ. *What comes next?* The reality is, we have more work to do to keep our promises to the next generation. Light of Christ Catholic Schools is proud to announce the Stability Initiative, our strategic fundraising plan for the next eleven years.

As we continue, it is essential to remember that we have a powerful purpose. At Light of Christ, we exist to lead our students to ***Encounter Christ in our Catholic faith through living, learning and serving.*** For 144 years, this has been our purpose - and now, at this opportune time, our schools are poised to set the stage for this encounter for many years to come.



Fall 2017 - Fall 2019

Construction of the new SMCHS continues...



August 21, 2019

Grand Opening of the new St. Mary's Central High School!



September 17, 2021

Inaugural Mass of Our Lady of Victory Chapel.

Our Mission:

Encountering Christ in our Catholic faith through living, learning and serving.

Our Vision:

Inspire and prepare the heart, soul and mind of future generations to radiate the Light of Christ.

Our Core Beliefs:

Encountering Christ
Cultivating Virtues
Inspiring Christ-like Relationships
Academic Excellence
Safe Environment

The Light of Christ Catholic Schools Board of Directors committed to adhere to Three Guiding Principles:

1. Any child desiring a Catholic education would not be turned away for lack of finances.
2. Any child desiring a Catholic education would not be turned away for lack of space.
3. Successful transition from a parochial school model to a school system belonging to the five Bismarck Parishes, operating with a balanced budget.

Our Lady of Victory... Pray for Us!

Building our Future



St. Mary's Grade School

We opened a new addition in 2019, featuring five new preschool and kindergarten classrooms, a library and music room.

Cathedral of the Holy Spirit Elementary

Cathedral received a beautifully upgraded, secure front entrance and the library was remodeled.



Saint Anne School

The new addition to connect the school and parish was opened in 2020. The interior of the school was remodeled. The new addition included seven classrooms, a new art room and library remodel.

St. Mary's Academy

The 1025 N 2nd Street campus has become a school for grades 6-8. New windows were installed and classrooms were refreshed throughout the building.



Campaign Milestones

William J. Schmidt Auditorium
Grand Opening - February 24, 2020



Our Lady of Victory Stadium & Smrekar Field
First Home Game - August 30, 2019



Enrollment & Academics



Enrollment Growth

The chart below shows the incredible enrollment growth Light of Christ Catholic Schools has experienced since it was formed in 2012.

	2012-13	2021-22	% Increase
Number of Students (PreK-Grade 12)	1,042	1,385	+32.9%
Number of Families (PreK-Grade 12)	552	815	+47.6%
Number of Elementary Classrooms (PreK to Grade 5)	24	44	+83.3%
Size of Kindergarten Class (3 schools)	76	106	+39.5%

Academic Excellence

At the end of each school year, we have the opportunity to analyze our student assessments and better understand our academic growth and achievements. Once again, our Light of Christ students are meeting and exceeding state and national academic standards.

All students in K-12 participate in at least one assessment that gauges a level of improvement in the area of math and English language arts. In addition, students in grade 8, 10, 11 and 12 engage in a Pre ACT and ACT assessment that provide indicators for college and career readiness.

- The goal for the North Dakota State Assessment (NDSA) is for all grade levels that participate in the tests to exceed the proficiency rate of the state average. **Once again, Light of Christ students have far surpassed the state average in the areas of math, English and science.**
- The goal for the interim STAR 360 assessment, which is administered a minimum of three times a year for students in grade K-11 in math and English is to see each grade level grow an average of 45-50 student growth points. **Light of Christ students continue to accomplish this yearly goal for both math and English.**
- The data for students that participate in the Pre ACT and then ACT in grade 8, 10, 11 and 12 demonstrates **a strong path to growth in readiness indicators for college and career.**

All these results are a genuine celebration of the commitment to academic excellence for both the incredible instructors and students at Light of Christ Catholic Schools.

Strength of Vocations

Most importantly, our commitment to providing faithful Catholic education has shaped the lives of our students and the community. Through our mission, we prepare our students to be ready for the future through solid Catholic formation. This readiness is demonstrated by the dramatic increase in vocations to the priesthood and religious life from our alumni.

Since 2007, 10 SMCHS alumni have been ordained priests and 7 out of our 19 current seminarians are SMCHS alumni. Light of Christ Catholic Schools is incredibly proud of the many men and women who have answered Jesus' call to the consecrated religious life.

Having such a strong Catholic school system is a great blessing to all of the Bismarck Diocese. The vibrancy of life in the Diocese has grown dramatically as our schools have grown.

At Light of Christ Catholic Schools, we know our incredible community begins with the choice and engagement of faithful parents. Our parents have seen the importance of an authentically Catholic education. The fruit of their choice to be involved in our schools, through both sending their children and participating themselves, is being born not only in the lives of our students, but also in their lives.

“A good school provides a rounded education for the whole person. And a good Catholic school, over and above this, should help all its students to become Saints.”
– Pope Benedict XVI



Photo courtesy of Deacon Joe Krupinsky

How we kept the promise...

The Keep the Promise Capital Campaign has been an unprecedented success.

Since the forming of Light of Christ Catholic Schools, the system transitioned from a group of parochial schools loosely affiliated with each other, to a cohesive system that has remained true to its mission and purpose of forming the next generation of Saints.

The total cost of our project increased from the time the original campaign goal was set in 2014. Bids for the new high school as it had always been envisioned were not finalized until 2017. Due to higher than anticipated building costs, to remain under budget would mean not finishing portions of the facilities.

Despite this, Light of Christ followed its guiding principles - to not turn anyone away due to finances and not turn anyone away for space. Gratefully, enrollment in our schools grew 33% since 2013, forcing construction of additional square feet at elementary schools, not initially planned. In the process of improving the elementary schools and Academy, additional repairs and maintenance were discovered and needed to be addressed.

To avoid only building part of the high school or ignoring critical needs at the elementary schools and Academy, the decision was made to move forward with these projects to meet the needs of our students. From the start of the campaign, 80% of our pledge goal was needed to start the construction of our buildings. During the construction phase, low-interest financing was used to bridge the gap between progress payments and pledge receptions. The project scope and cost increases are included in the current financing.





Original Capital Campaign Goal (Set in 2014): \$46.5 Million

Campaign Pledges to Date: \$46.6 Million

Pledges Collected to Date: \$23.9 Million

Note: Roughly half the pledges have been collected, with the remainder to be collected over the next 10 years.

Actual Cost for All Projects \$59.3 Million

Throughout the campaign, considerations were made to ensure that the projects would be completed and needs would be met at each of our schools, including:

- Larger additions at elementary schools
- Repairs and maintenance on existing buildings
- Additional site development at new campus & existing facilities
- Accrued interest while pledges are being completed
- Increased building costs at new campus & existing facilities

Fortunately, all of these projects and maintenance tasks were completed and our schools had all of the resources and spaces they needed to continue educating our students, before the significant recent rise in construction costs and the challenges of the pandemic.

Stability for Generations

The need for excellent Catholic education has never been more critical. Built on our firm Benedictine foundation, our schools are uniquely equipped to form students in the Catholic tradition so they are ready for the future and to be a light to the world.

Light of Christ Catholic Schools intends to begin the next chapter of its incredible story by launching the Stability Initiative. A new school system has been formed. New buildings have been built. The infrastructure for smooth operations and alignment on all levels has been laid.

The goal of the Stability Initiative is to offer the best Catholic education, with competitively paid employees, for an affordable cost to our families.

To ensure long-lasting, dependable, financial stability for our schools, we hope to raise \$12 million by December 31, 2022 in order to allow resources to be shifted to build an \$80 million endowment.

Stability Initiative Fundraising Goals

PHASE 1

June 1, 2022 - December 31, 2022

Intention: Raise funds to allow for resources to be shifted to creating an endowment

Goal: \$12M to service debt from 7/1/2022-6/30/26

Allocation of Capital: \$6M for debt service, \$6M for debt prepayments

Primary Funding Methods: Cash and Pledges

PHASE 2

January 1, 2023 - June 30, 2026

Intention: Create a large general endowment to increase stability of cashflow

Goal: \$40M to generate \$2M annually

Allocation of Capital: General Endowment

Primary Funding Methods: Cash, Pledges, Planned Gifts

PHASE 3

July 1, 2026 - June 30, 2033

Intention: Increase the size of both the general and specialized endowments

Goal: \$40M+ to generate an additional \$2M annually

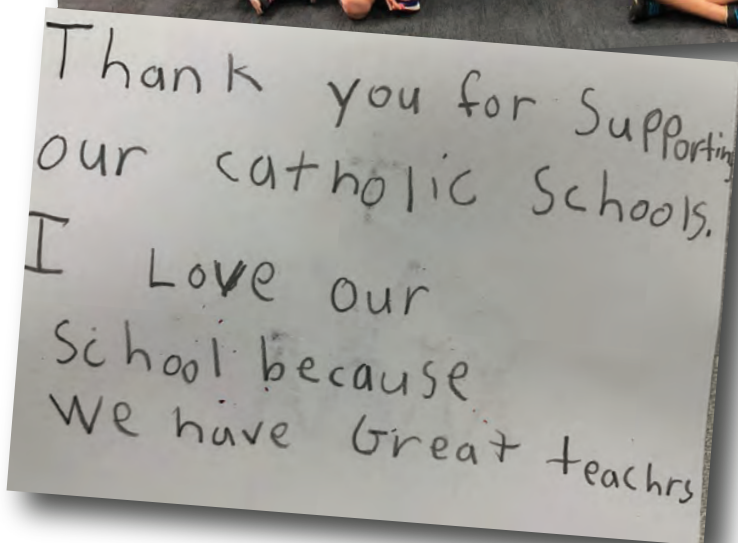
Allocation of Capital: General & Specialized Endowments

Primary Funding Methods: Cash, Pledges, Planned Gifts

Special Announcement: **\$5 MILLION MATCH**

All monetary donations to Phase 1 of the
Stability Initiative will be 100% matched up to \$5 Million -
through the generosity of Robert Franzen.

Only ACTUAL dollars received by December 31, 2022 will be included in this matching gift.



Donate online or learn more at: keepthepromise.net/stability-initiative

Jake Markel
jmarkel@lightofchristschools.org
(701) 751-8739

Toby Schweitzer
tschweitzer@lightofchristschools.org
(701) 220-1507

Endowment & Our Future

The distributions from an \$80 million endowment would conservatively cover our annual fundraising needs each year.

By helping us achieve our goal, you will help stabilize our schools for generations to come. Hard times will not stop our ability to educate our students in the traditions of the faith. Rather than yielding to the dark trends facing private education, the light of Christ will continue to shine through our schools well into the future. These necessary steps to create stability for our schools is for those who we exist to serve – our incredible students now and those who will come after them.



In addition to directly benefiting students for generations to come, financial stability allows Light of Christ to responsibly raise teacher and staff compensation.

Quite simply, we could not exist without our wonderful teachers and staff. Our mission of fostering an encounter with Christ directly depends on their good work. Truly, there are few better suited to provide stability for our students than those who serve them every day. This endowment will provide stable income that will allow us to give bigger raises to retain high-quality, mission-driven teachers and staff who are highly effective at forming young women and men to be Saints.

Cost to Educate

We are committed to our promise to keep Catholic education affordable for all of our families, and we take seriously our commitment to not turn a student who desires a Catholic education away because of lack of finances. For this reason, we are taking critical steps to align our fundraising efforts to ensure financial stability for our schools, so it does not fall on the backs of our families in the form of higher tuition.

There are three sources of funding to cover the actual costs of educating a student: tuition, parish/diocesan contributions and the funds that are raised through our partnerships and annual fundraising. Thanks to the generosity and commitment of our Bismarck Catholic parishes, our donors and partners, every student receives a subsidy to attend Light of Christ Catholic Schools.

AVERAGE COST TO EDUCATE A LIGHT OF CHRIST STUDENT =	\$9,444
---	---------

AVERAGE MINIMUM TUITION PAID BY EACH STUDENT =	\$4,952
--	---------

AVERAGE PARISH/DIOCESAN CONTRIBUTIONS PER STUDENT =	\$1,689
---	---------

AVERAGE NEED PER STUDENT FROM FUNDRAISING EFFORTS =	\$2,803
---	---------





A Legacy of Catholic Education

As with all Catholic organizations, our story ultimately begins with Jesus Christ who commissioned his apostles to "Go, therefore, and make disciples of all nations, baptizing them in the name of the Father, and of the Son, and of the Holy Spirit" (Mt 28:19). Through the grace given by the Holy Spirit, the early disciples boldly heeded His call and spread the Gospel across the world, changing hearts and the course of history as they went. Through the work of her Saints, the Catholic Church grew and became integrated with the very fabric of societies where it took place.

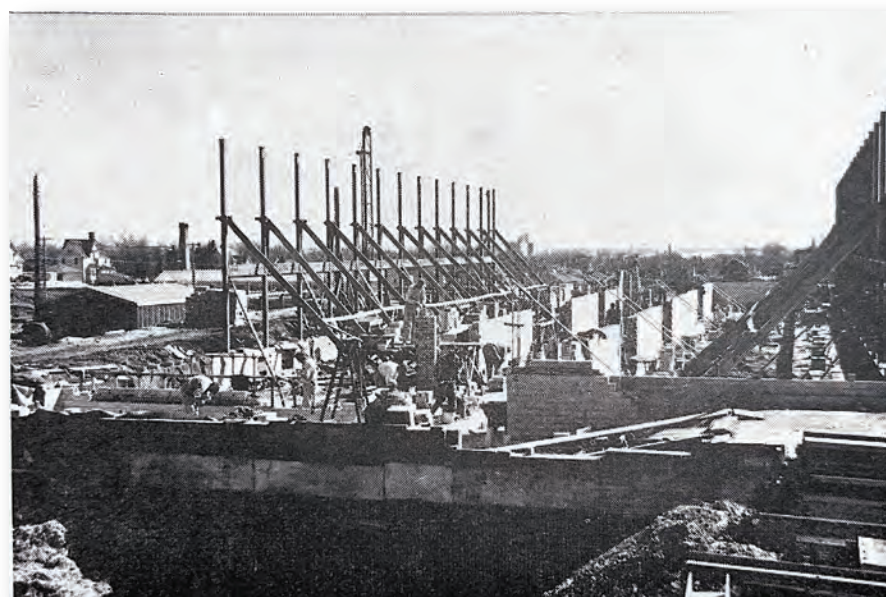
This was exemplified by Saint Benedict, who established religious communities built on the vows of stability, fidelity to the monastic way of life and obedience. St. Benedict was born after the fall of the Roman empire amidst the chaos following the empire's fall. Against the despair of society collapsing around them, resilient Benedictine Monasteries provided havens of stability. They held the people they served together through essential services such as education.



St. Mary's Academy & Boarding School - Est. 1906



9th Street - Bismarck, ND



St. Mary's Central High School - 1025 N 2nd Street - Est. 1951

This ability of the Benedictines to serve the needs of the communities around them has continued for almost 1,500 years into the present day. It was indeed present in the Benedictine Sisters who arrived in Bismarck, ND in 1878. Boldly and faithfully, they immediately set to work by establishing St. Mary's Academy & Boarding School and St. Alexius Hospital. Life in Bismarck, then a small railroad town in the middle of the prairie, was hard. On top of the challenges of establishing a school and hospital, the sisters faced harsh winters and in a town often seen as an isolated place that offered hiding for those seeking to avoid the law.

Despite these hardships, the sisters were successful and the school grew. Always forward-thinking, a new school building was created in 1906. Eventually this building was renovated to become part of St. Alexius Hospital, and the 2nd Street location was built in 1951.

One of several keys to the success of the Benedictines was their vow of stability. Simply explained, a vow of stability is a vow to fidelity to a specific community – to a specific place, no matter what may come. Our founders were committed to the people of Bismarck through their prayer and work. They established systems that would help make disciples of Christ long after they passed away. This created a stable foundation, on which Light of Christ stands firm today.

We are proud of our history and completely committed to the future.



God Our Father,

Who sent to us Christ as our Light
in the darkness,
send again, we beg you,
the Light of Christ to guide this great work
so that we may keep our promise
to the next generation.

May we allow His Light to fill the souls
of our children with virtue,
the minds of our parents
and teachers with wisdom,
and the hearts of our friends
and benefactors with generosity.

Through the intercession of the Blessed Virgin Mary,
may our Catholic schools be a sanctuary of love
shining with the Light of Christ.

Amen.

Imprimatur
Bishop David D. Kagan

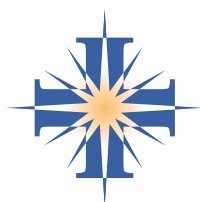
Donate online or learn more at: *keepthepromise.net/stability-initiative*

Jake Markel

jmarkel@lightofchristschools.org
(701) 751-8739

Toby Schweitzer

tschweitzer@lightofchristschools.org
(701) 220-1507



Light of Christ Catholic Schools